

Pemberton

P A R K & L E I S U R E H O M E S

Skydale

The Skydale is an impressive new addition to the Pemberton range of lodges and is brimming with character and charm. This 40 x 20 model is fundamentally an open plan home with each social space flowing seamlessly into the next. A display unit creates a screen between the side entrance and the spacious lounge. The U shaped kitchen has plenty of room for food preparation and the breakfast bar gives diners a more casual option for meal times.





Pemberton Skydale 40 x 20 2 bed shown in optional Vinylit Shadow Turner Oak and Kitami Oak with optional Anthracite Windows & Doors



Industrial elements can be found in the lighting and the concrete effect dining and coffee table with a contrast metal base. Kitchen plinth lighting and under cupboard spotlights allow for ambient lighting in the evenings. Both bedrooms are bright and airy with a zesty, fresh colour scheme throughout. Between the master bedroom and en-suite shower room you have a large dressing area with hanging space, shelving and drawers.

Skydale's exterior has an option for Vinylit contrast cladding combining both horizontal and vertical panels to create a stunning, crafted effect. Combined with optional anthracite windows this new model certainly makes its presence known in any location.

Highlights

- Hive thermostat
- Gas combi central heating system with thermostatic radiator valves
- PVCu double glazing with French doors to front elevation
- Integrated washer/dryer, dishwasher and microwave
- Luxurious sofa and sofa bed with accent chair
- High level cooker with separate oven and grill
- Breakfast bar with 2 bar stools
- Plinth lighting in kitchen
- Entrance vestibule with storage
- Hallway closet
- 5ft bed in the master bedroom and 3ft beds in the second bedroom
- TV points in both bedrooms
- Grain Effect Plastic Cladding
- Lounge Scatter Cushions
- Bedroom Throws and Co-ordinating Scatter Cushions
- Duvet Sets
- Vaulted ceiling throughout with a minimum ceiling height of 2.4m (8ft)

40ft x 20ft

2 bedroom






Skydale

Platinum Package Option includes the following:

- Aggregate Coated Steel Tile System with a 40 Year Weatherproof Warranty
- Wood effect Panelled Ceiling
- Wallpaper Finish
- Domestic Skirting and Door Casings
- Electric Combination Safe
- Wine Cooler
- Bluetooth Speakers
- Outdoor Tap

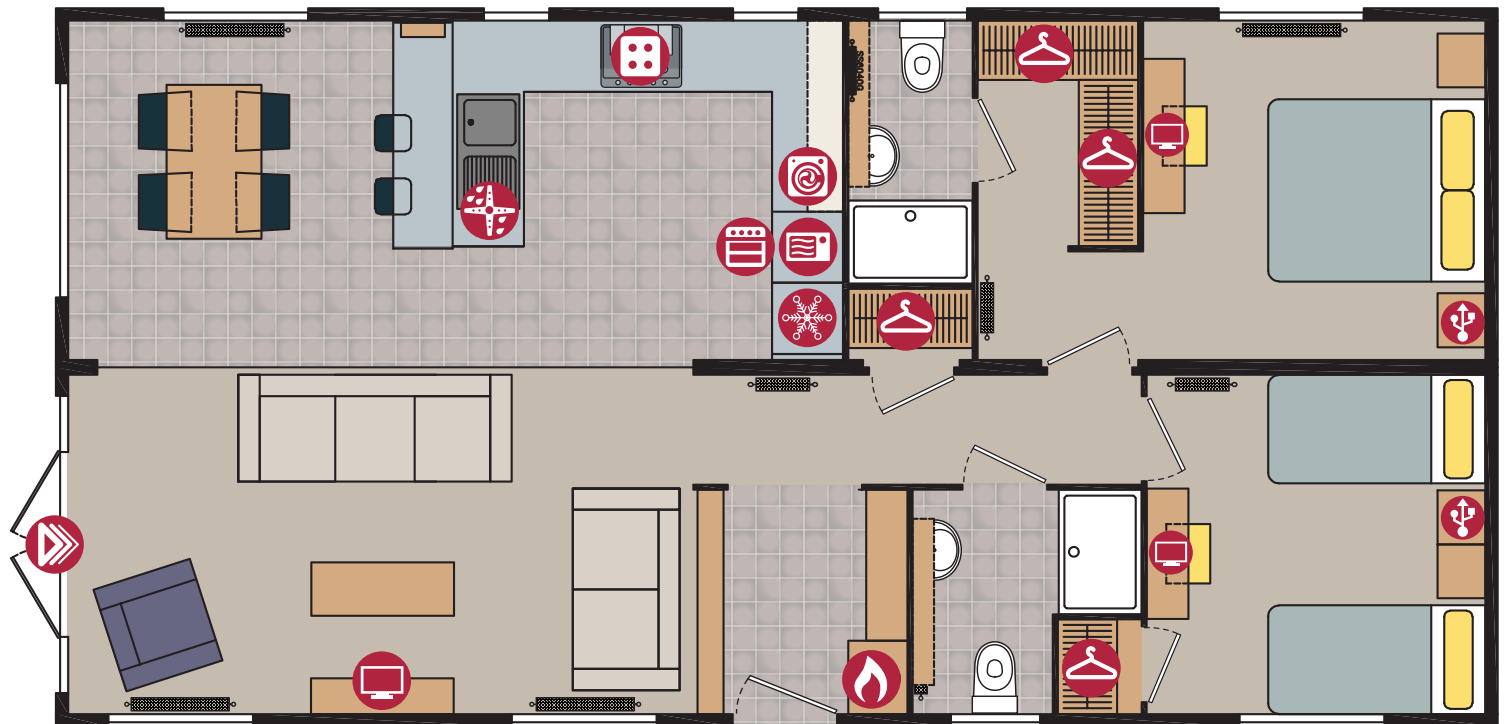
Residential Specification Option includes the following:

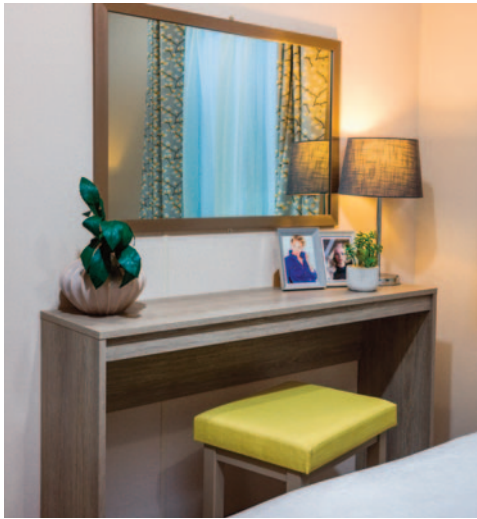
- Roof 250mm insulated
- 100mm thick wall
- Floor minimum 65mm insulated
- Windows low E glass and Argon filled
- Superior Insulation U values exceeding the British Standard

- | | |
|--|--|
|  Cooker |  USB Point |
|  Hob |  TV Space |
|  Fridge-Freezer |  Electric Fire |
|  Microwave |  Patio Doors |
|  Washer/Dryer |  French Doors |
|  Dishwasher |  Bifold Doors |
|  Boiler |  Wardrobe |



40ft x 20ft - 2 bedroom





Options available to order

- Residential Specification to BS3632 available in all cladding types
- Patio doors or bifold doors to front elevation
- Wine cooler
- Platinum Package
- Skydale Lodge available in Canexel, Vinylit & Stucco Cladding
- Lift up storage bed
- All electric version including central heating
- Bluetooth





Pemberton

P A R K & L E I S U R E H O M E S

Woodhouse Lane, Wigan, Lancashire WN6 7NF

Tel: 01942 321 221

Email: info@pembertonlh.co.uk

www.pembertonlh.co.uk

The first choice for your new home