

# Rivendale Lodge

The Rivendale is Pemberton's most established luxury lodge offering 5 different layouts ranging from 40 foot to 50 foot options. The stand out offset pitch makes for an interesting layout and provides a generous amount of space in the living areas, where it is most needed. To the side of the lounge area there is a Snug which can be used as an office, a supplementary bedroom (as it contains a sofa bed) or purely a cosy 'den' for some quiet time away from it all.



PLATINUM



*Pemberton Rivendale 44 x 20 2 bed Platinum shown in optional CanExel Cladding with optional Anthracite Windows & Doors*



Whilst the Rivendale suits its open plan kitchen, dining and living area there is an option to close off the lounge creating a more formal layout. The lounge and dining furniture is beautifully crafted and sets the tone with other highlights being the beams, the plank effect accents in the Snug, bathrooms and master bedroom and the crittall effect shower enclosures.

### Highlights

- PVCu double glazing with bifold doors and patio doors to front elevation
- Gas combi central heating system with thermostatic radiator valves
- TV points in all bedrooms
- Freestanding American style fridge freezer
- Integrated washer/dryer, dishwasher and microwave
- Kitchen island
- Recessed electric fire and DVD unit
- Luxurious lounge suite
- Sofabed and accent chair in the Snug
- 5ft upholstered divan in the master bedroom with lift up flap for storage
- Vaulted ceiling throughout with a minimum ceiling height of 2.4m (8ft)
- Grain Effect Plastic Cladding
- External socket
- Extendable dining table to seat 6 people
- Lounge Scatter Cushions
- Bedroom Throws and Co-ordinating Scatter Cushions
- Duvet Sets
- Wireless thermostat
- Integrated cooker with separate oven and grill

40ft x 20ft	2 & 3 bedroom
44ft x 20ft	2 & 3 bedroom
50ft x 20ft	2 bedroom



PLATINUM



PLATINUM



PLATINUM



PLATINUM











# Rivendale Lodge

## Platinum Package Option includes the following:

- Aggregate Coated Steel Tile System with a 40 Year Weatherproof Warranty
- Wood effect Panelled Ceiling
- Wallpaper Finish
- Domestic Skirting and Door Casings
- Electric Combination Safe
- Hive Heating System
- Wine Cooler
- Bluetooth Speakers
- Outdoor Tap

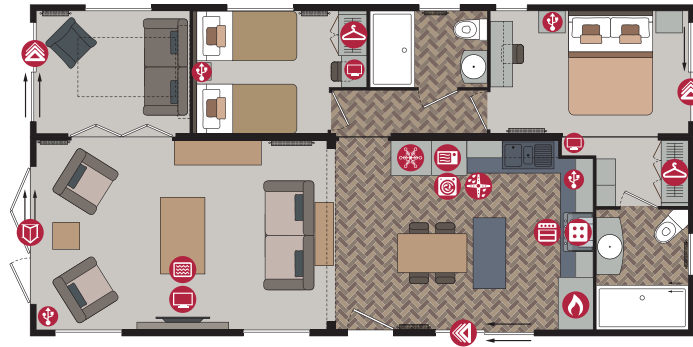
## Residential Specification Option includes the following:

- Roof 250mm insulated
- 100mm thick wall
- Floor minimum 65mm insulated
- Windows low E glass and Argon filled
- Superior Insulation U values exceeding the British Standard

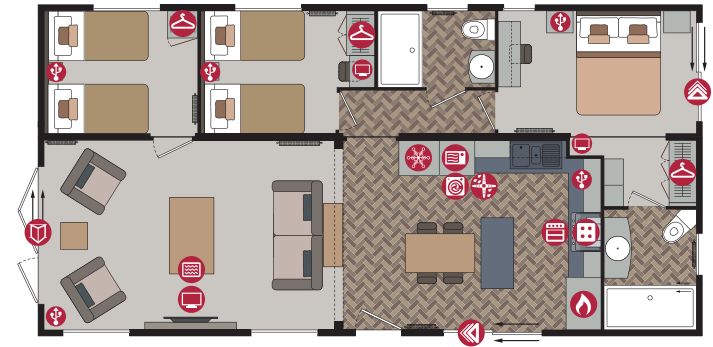
- |  |  |
|--|--|
|  Cooker         |  USB Point      |
|  Hob            |  TV Space       |
|  Fridge-Freezer |  Electric Fire  |
|  Microwave    |  Patio Doors  |
|  Washer/Dryer |  French Doors |
|  Dishwasher   |  Bifold Doors |
|  Boiler       |  Wardrobe     |



40ft x 20ft - 2 bedroom



40ft x 20ft - 3 bedroom



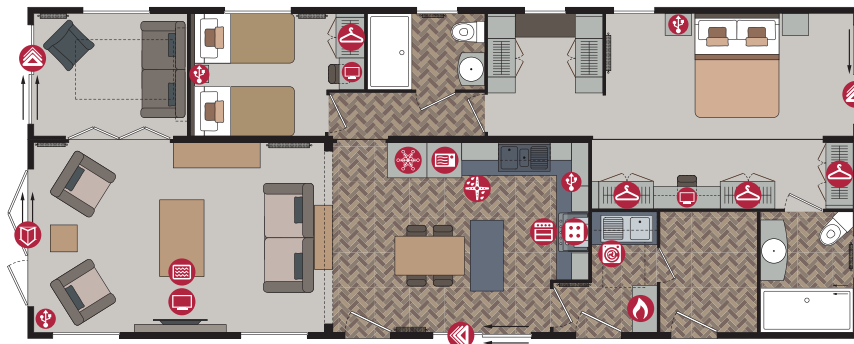
44ft x 20ft - 2 bedroom (Utility)



44ft x 20ft - 3 bedroom (Utility)



50ft x 20ft - 2 bedroom (Utility)



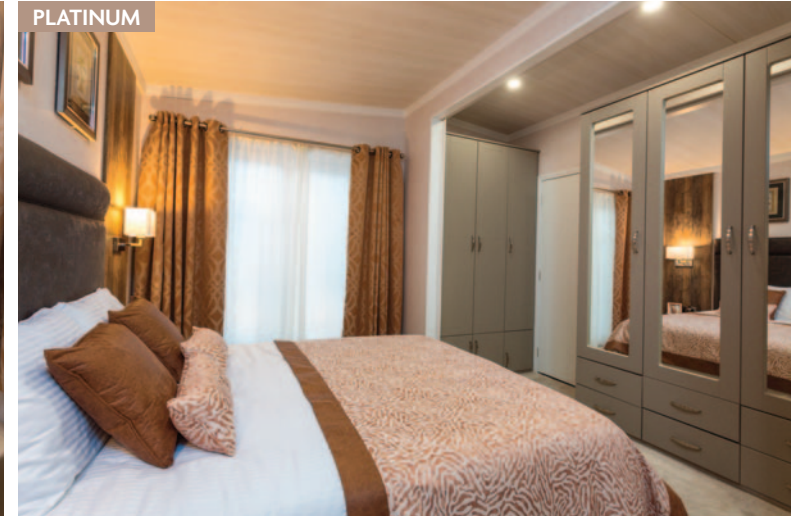
PLATINUM



PLATINUM



PLATINUM



PLATINUM



### Options available to order

- Residential Specification to BS3632 available in all cladding types
- Wine cooler
- Utility room
- Closed off lounge
- Lounge curtains in lieu of roman blinds
- Privacy curtains for the Snug
- Bath in lieu of shower (ensuite only)
- 3ft wide beds in twin room
- Patio door to lounge
- Skylight in Snug
- Windows in lieu of patio doors in the master bedroom and Snug
- Stowaway occasional bed in twin room
- Other sizes available - please enquire
- Platinum Package
- Rivendale Lodge available in Canoxel Cladding
- Lift up storage bed
- All electric version including central heating

For further details see standard features checklist on pages 76-77.



**Pemberton**  
 PARK & LEISURE HOMES