

Glendale Lodge

The Glendale is characterised by its classically elegant panelling, its large open kitchen with vast kitchen island and plush barstools and its comprehensive specification including a range cooker. With an impressive front elevation this lodge has two sets of bifold doors which entice the outside in and with the canopy lights you can soak up the atmosphere on your Pemberton deck in the evenings.



PLATINUM



Pemberton Glendale 44 x 22 3 bed Platinum shown in optional CanExel Cladding with optional Anthracite Windows & Doors



The optional entrance hallway (44ft model only) is extremely practical with plenty of space for shoes and coats and the added benefit of a tile effect vinyl floor where muddy footprints are easily cleaned away. Bedrooms are well appointed, spacious and luxurious with generous headboards and co-ordinating upholstered divans with built-in storage. There is everything to love with this lodge.

Highlights

- PVCu double glazing with two sets of bifold doors to front elevation
- Gas combi central heating system with thermostatic radiator valves
- TV points in all bedrooms
- Kitchen skylight
- Kitchen island with pop up socket
- Extendable dining table with plush dining chairs and matching bar stools
- Integrated washer/dryer, fridge/freezer, dishwasher and microwave
- Range cooker
- Downlit fireplace with electric stove
- Deep buttoned sofas with a matching storage footstool (one sofa is a sofabed)
- Two accent wing chairs
- 5ft upholstered divan in the master bedroom and second bedroom with lift up flap for storage
- Vaulted ceiling throughout with a minimum ceiling height of 2.4m (8ft)
- Grain Effect Plastic Cladding
- External socket
- Lounge Scatter Cushions
- Bedroom Throws and Co-ordinating Scatter Cushions
- Duvet Sets
- Hallway (standard in 50ft model)

40ft x 22ft	2 & 3 bedroom
44ft x 22ft	2 & 3 bedroom
50ft x 22ft	3 bedroom



PLATINUM



PLATINUM



HALLWAY OPTION

PLATINUM



PLATINUM



Glendale Lodge

Platinum Package Option includes the following:

- Aggregate Coated Steel Tile System with a 40 Year Weatherproof Warranty
- Wood effect Panelled Ceiling
- Wallpaper Finish
- Domestic Skirting and Door Casings
- Electric Combination Safe
- Hive Heating System
- Wine Cooler
- Bluetooth Speakers
- Outdoor Tap

Residential Specification

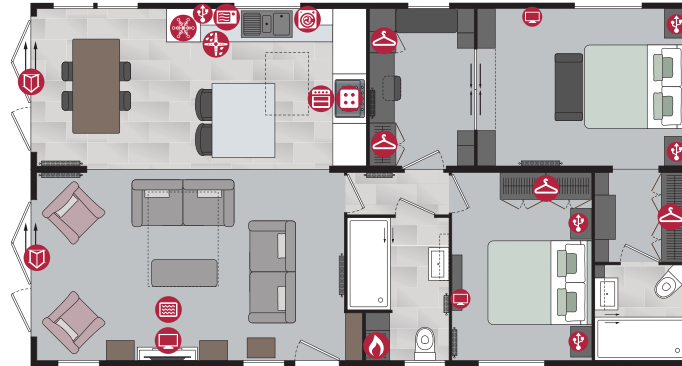
Option includes the following:

- Roof 250mm insulated
- 100mm thick wall
- Floor minimum 65mm insulated
- Windows low E glass and Argon filled
- Superior Insulation U values exceeding the British Standard

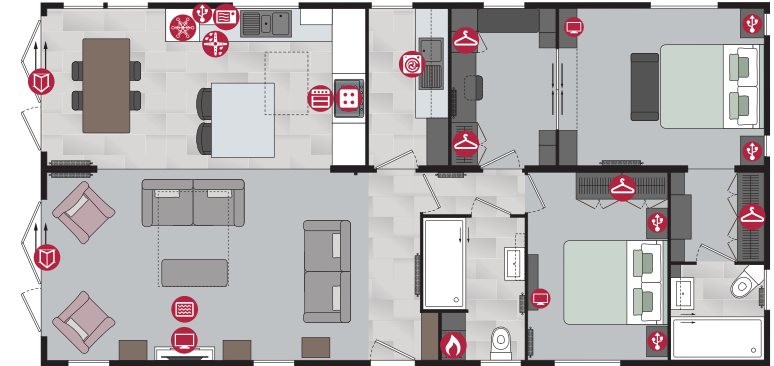
- | | |
|--------------------------------------------------------------------------------------------------|--------------------------------------------------------------------------------------------------|
|  Cooker |  USB Point |
|  Hob |  TV Space |
|  Fridge-Freezer |  Electric Fire |
|  Microwave |  Patio Doors |
|  Washer/Dryer |  French Doors |
|  Dishwasher |  Bifold Doors |
|  Boiler |  Wardrobe |



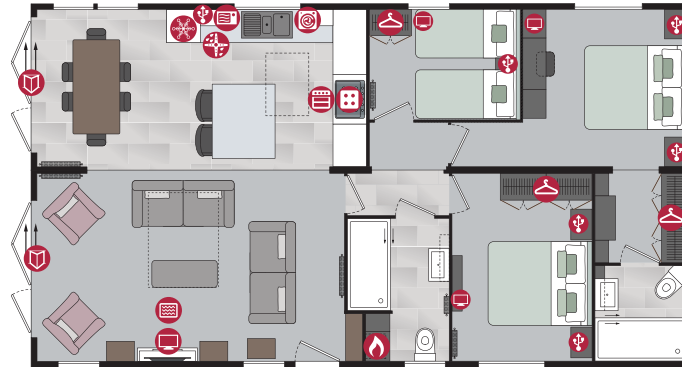
40ft x 22ft - 2 bedroom



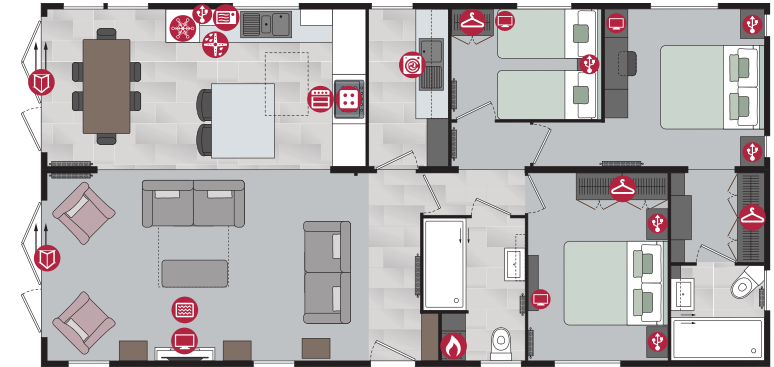
44ft x 22ft - 2 bedroom



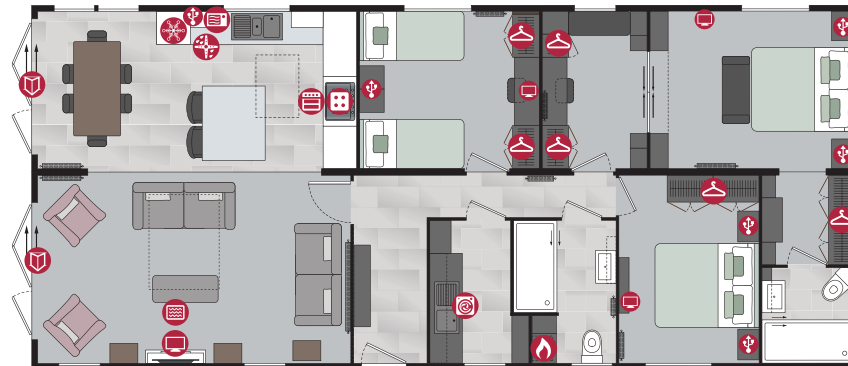
40ft x 22ft - 3 bedroom



44ft x 22ft - 3 bedroom



50ft x 22ft - 3 bedroom



PLATINUM



PLATINUM



PLATINUM



PLATINUM



Options available to order

- Residential Specification to BS3632 available in all cladding types
- Entrance hallway (44ft only)
- Utility room (44ft only) with vinyl floor covering
- Wine cooler
- Windows in place of bifold doors
- Lounge curtains in lieu of roman blinds
- Stowaway occasional bed in twin room
- Platinum Package
- Glendale Lodge available in Canexel Cladding
- Lift up storage bed
- All electric version including central heating

For further details see standard features checklist on pages 76-77.



Pemberton
 PARK & LEISURE HOMES