





Avon

There is much to love about the Avon including fresh fabrics, a chic grey wood colour and the ever popular open plan layout. This year the kitchen has sleek handleless doors, a stylish worktop and a black cooker hood. We have added a fourth model to the range too which is a 38ft 3 bed with an en-suite to the master bedroom.

Highlights

- Integrated cooker with separate oven and grill
- Wall mounted flame effect fire
- Fixed lounge seating with co-ordinating accent chair
- En-suite toilet facilities in 35ft 2 bed and 38ft 3 bed
- Windows to front aspect unless built to Residential Specification where there is a choice of French or patio doors

















30ft x 12ft	2 bedroom
35ft x 12ft	2 & 3 bedroom
38ft x 12ft	3 bedroom

Images shown are from the Avon 35 x 12, 2 bed

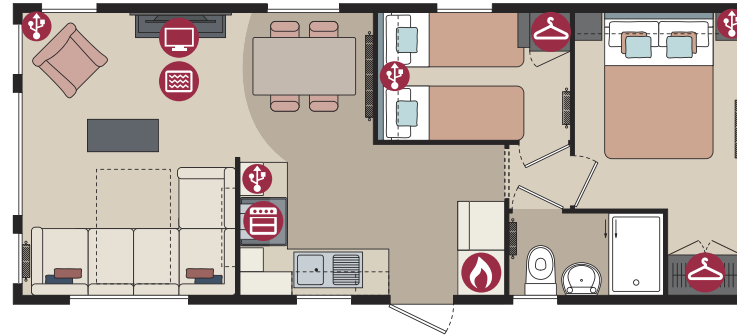
Avon

Residential Specification
Option includes the following:

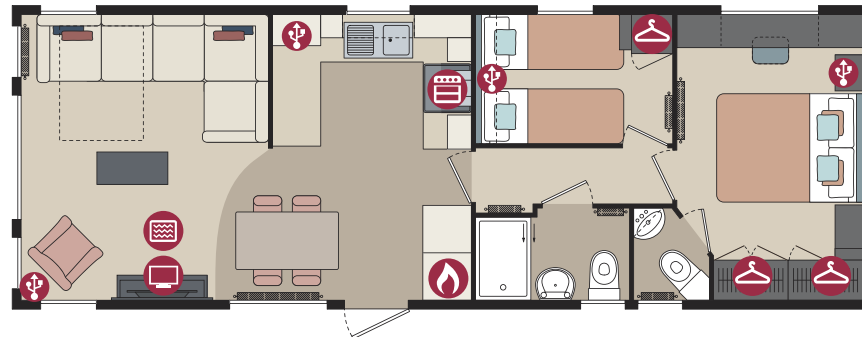
- Roof 250mm insulated
- 100mm thick wall
- Floor minimum 65mm insulated
- Windows low E glass and Argon filled
- Superior U values exceeding the British Standard

- | | |
|--|---|
|  Cooker |  USB Point |
|  Hob |  TV Space |
|  Fridge-Freezer |  Electric Fire |
|  Microwave |  Patio Doors |
|  Washer/Dryer |  French Doors |
|  Dishwasher |  Bifold Doors |
|  Boiler |  Wardrobe |

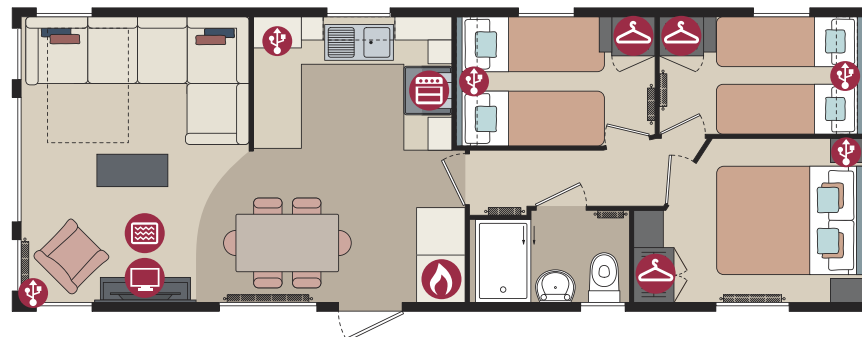
30ft x 12ft - 2 bedroom



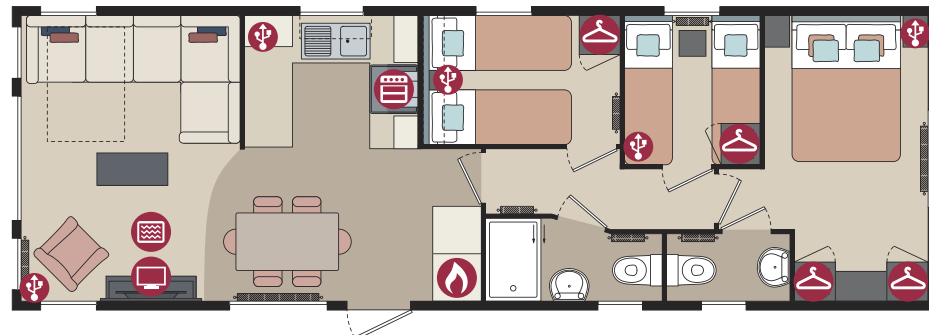
35ft x 12ft - 2 bedroom



35ft x 12ft - 3 bedroom



38ft x 12ft - 3 bedroom





Options available to order

- Residential Specification to BS3632 available in all cladding types
- Avon Lodge available in Thermowood, Vinyl and Canaxel Cladding
- Gas combi central heating system with thermostatic radiator valves
- PVCu double glazing
- Patio doors or French doors to front elevation
- Integrated dishwasher and washer/dryer (excluding 30ft)
- Fridge/freezer and microwave
- Accessory pack
- Pre-galvanised chassis
- Lift up storage bed in the master bedroom
- TV points in the twin bedrooms
- Guzunder beds in twin room

For further details see standard features checklist on pages 70-71.



Testimonial

We have been operating Caravan Parks since 1975 and 90% of all the new caravans we sold have been Pemberton. They are simply the best made caravans on the market.

Terry, Bonalston



Pemberton
PARK & LEISURE HOMES