





# Glendale Lodge

The Glendale has a beautiful kitchen layout with a range cooker and kitchen island. Plush dining chairs and matching bar stools sit alongside the painted lounge and dining furniture. As ever the range of different layouts gives so many options to customise your home and make it heavenly.

## Highlights

- PVCu double glazing with two sets of bifold doors to front elevation
- Gas combi central heating system with thermostatic radiator valves
- TV points in all bedrooms
- Kitchen skylight
- Kitchen island with pop up socket
- Extendable dining table with plush dining chairs and matching bar stools
- Integrated washer/dryer, fridge/freezer, dishwasher and microwave
- Range cooker
- Designer fire
- Deep buttoned sofas with 2 accent wing chairs and a storage footstool
- 5ft divan in the master bedroom and second bedroom with lift up flap for extra storage
- Accessory pack
- Vaulted ceiling throughout with a minimum ceiling height of 2.4m (8ft)
- Vinyl cladding
- External socket

PLATINUM



40ft x 22ft	2 & 3 bedroom
44ft x 22ft	2 & 3 bedroom
50ft x 22ft	3 bedroom

Images shown are from the Glendale 44 x 22, 3 bed



**Pemberton**  
PARK & LEISURE HOMES



PLATINUM



PLATINUM



PLATINUM

















PLATINUM



# Glendale Lodge

Platinum Package Option includes the following:

- Aggregate Coated Steel Tile Roof System
- Wood Panelled Ceiling
- Wallpaper Finish
- Tiling/Aqua-board Finishes
- Domestic Interior Doors

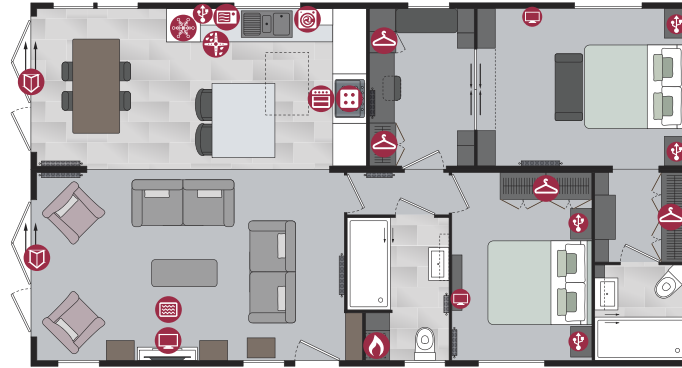
- |  |   |
|--|---|
|  Cooker         |  USB Point     |
|  Hob            |  TV Space      |
|  Fridge-Freezer |  Electric Fire |
|  Microwave      |  Patio Doors   |
|  Washer/Dryer   |  French Doors  |
|  Dishwasher     |  Bifold Doors  |
|  Boiler         |  Wardrobe      |

Residential Specification Option includes the following:

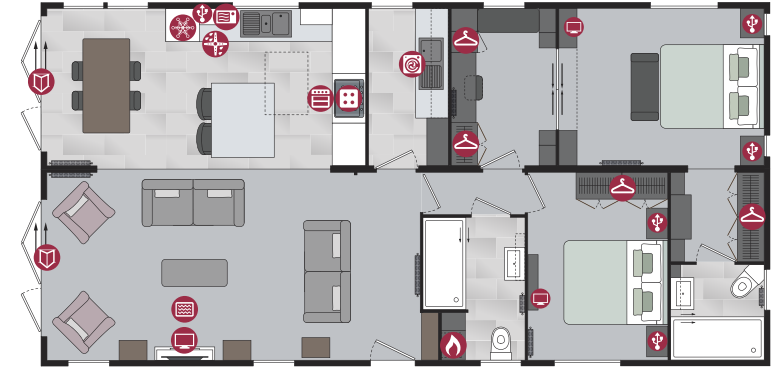
- Roof 250mm insulated
- 100mm thick wall
- Floor minimum 65mm insulated
- Windows low E glass and Argon filled
- Superior U values exceeding the British Standard



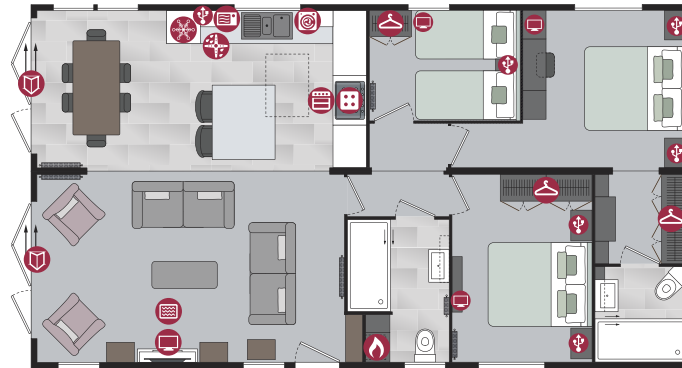
40ft x 22ft - 2 bedroom



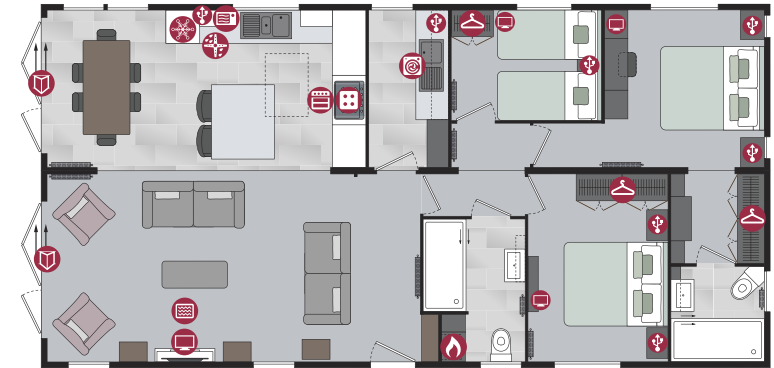
44ft x 22ft - 2 bedroom



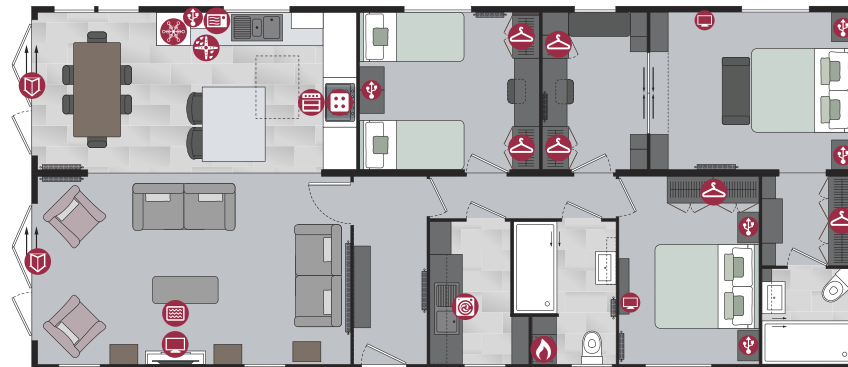
40ft x 22ft - 3 bedroom



44ft x 22ft - 3 bedroom



50ft x 22ft - 3 bedroom



PLATINUM



PLATINUM



## Options available to order

- Residential Specification to BS3632 available in all cladding types including Stucco
- Glendale Lodge available in Thermowood and Canoxel Cladding in a wide range of colours
- Entrance hallway (44ft only)
- Utility room (44ft only)
- Wine cooler
- Safe
- Windows in place of bifold doors
- Lounge curtains instead of roman blinds
- Guzunder beds
- Platinum Package
- Bluetooth

For further details see standard features checklist on pages 70-71.

PLATINUM



PLATINUM



## Testimonial

*I like the storage and finish and the design of the Glendale Platinum, also the after sales has been very good and done in a timely manner.*

Sue, Regency Court



**Pemberton**  
PARK & LEISURE HOMES